

Principals

Brett Baker, President, BS Geology

Laura Cathcart-Dodge, Vice President, MS Geophysics
California Professional Geophysicist

Corporate Office

20434 Corisco Street
Chatsworth, CA 91311
Main: 818-886-4500
Toll Free: 877-565-3590

Costa Mesa Office

3505 Cadillac Avenue
Suite O-209A
Costa Mesa, CA 92626
Main: 714-435-1073



Spectrum Geophysics locates, delineates, and documents near-surface features. Sites include military bases, landfills, schools, national parks, refineries, power plants, state highways, movie studios, Hospitals, residential, commercial, and industrial facilities.

Founded in 1985 to provide cost-effective geophysical solutions to environmental and engineering problems, Spectrum Geophysics employs state-of-the-art utility-locating and geophysical methods in heavy industrial and urban settings, where the subsurface can be highly complex.

With multiple field staff, Spectrum can meet the most demanding schedules and provide superior field services. Call us to discuss your geophysical and/or utility delineation project.


Spectrum's experience is based on our human capital, namely the experience of the principals and our project managers. Our entire staff of project managers has been with Spectrum Geophysics more than five years and each has conducted over 1,000+ investigations. This breadth of experience translates to unique cost-effective solutions for the most difficult of project sites.

The ability to integrate disparate geophysical methods with respect to site limitations is another fundamental element of our staff. This innovative approach to problem solving allows us to minimize cultural interferences as well as provide corroboration of survey results using various geophysical methods. Our extensive field experience also translates into a cost savings to our clients throughout initial survey design and site preparation tasks.

Corporate Data

Incorporated: January 1985 in California
Federal Tax ID: 95-3985559
State Tax ID: 323-5014-2
DUNS No.: 18475-5122
NAICS: 541360
DIR: 1000018546

Very Small Business Entity as Certified By:

- The Port of Long Beach
- San Diego County Water Authority
- Metropolitan Water District
- LA Metro (certified SBE) 

Updated September 2018

Insurance

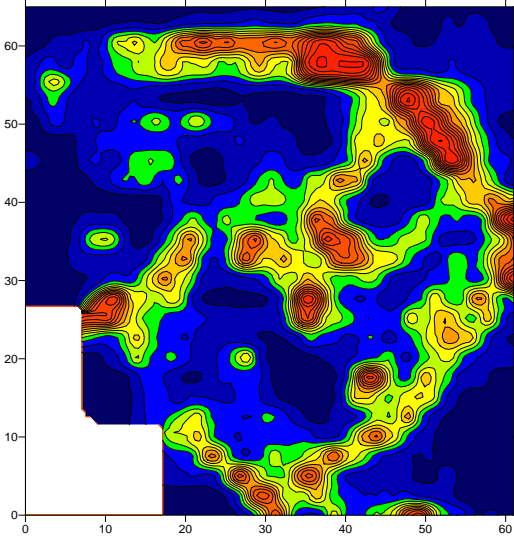
CGL	\$5M
Auto	\$1M
Workers Comp	Statutory

Bank

Mission Valley Bank
Sun Valley, California

Payment Options

Contracted terms
Net30 (with no contract)
Visa/MasterCard/Cash/Check



Professional Services

- 🔦 Utility location surveys
- 🔦 Pre-Excavation Screening
- 🔦 Engineering and planning surveys
- 🔦 UST identification
- 🔦 Locate abandoned monitoring wells
- 🔦 Identify abandoned oil and water wells
- 🔦 Ground penetrating radar
- 🔦 Paleochannel identification
- 🔦 UXO identification
- 🔦 Terrain conductivity
- 🔦 Rebar location
- 🔦 Vibration monitoring
- 🔦 Water well siting
- 🔦 Electrical Resistivity
- 🔦 Geologic characterization
- 🔦 Seismic surveys
- 🔦 Downhole seismic
- 🔦 Downhole logging
- 🔦 Rippability surveys
- 🔦 GPS
- 🔦 AutoCAD mapping



Strengths

- ⚡ State-of-the-art instrumentation
- ⚡ Geophysical method integration
- ⚡ Excellent communications
- ⚡ Extensive project experience
- ⚡ Staff commitment to excellence
- ⚡ 40 Hour OSHA trained
- ⚡ UPRR & BNSF trained and certified
- ⚡ LPS trained (Exxon-Mobil/Chevron)
- ⚡ Choice Point Background Clearance
- ⚡ Transportation Worker Identification Credential (TWIC)

Instruments

- ⚡ Sensors and Software Noggin
SmartCart GPR
- ⚡ SuperSting R8/IP resistivity meter
- ⚡ Radiodetection 4000 utility locators
- ⚡ Geometrics Geode System
- ⚡ Geometrics 858 cesium-vapor magnetometer
- ⚡ GSSI Structure Scan
- ⚡ Radiodetection RD500 sonic-locator
- ⚡ Geonics EM-61 high-sensitivity metal detector
- ⚡ Geonics EM-31 terrain conductivity meter
- ⚡ Trimble Pro-XR and NavCom GPS Units
- ⚡ Utility location equipment
- ⚡ Vivax Electromagnetic Utility Locator



PARTIAL CLIENT LIST

Wood Environment and Infrastructure Solutions Inc. (formerly AMEC Foster Wheeler)

EMCOR

Tetra Tech EM, Inc.

Long Beach Unified School District

Waterstone Environmental, Inc.

Caltrans

Ramboll

Walt Disney Studios

LAX/Ontario Los Angeles World Airports

Metropolitan Transportation Authority

Ports of Long Beach and Los Angeles

Arcadis

AECOM

Northrop Grumman

Turner Construction

Jacobs

Orion Construction

Boeing Company

Brown and Caldwell

Fox Studio Operations

Geosyntec Consultants

Jet Propulsion Laboratories

Los Angeles Unified School District

The Boring Company

Leighton Consulting

The Culver Group

Roux and Associates

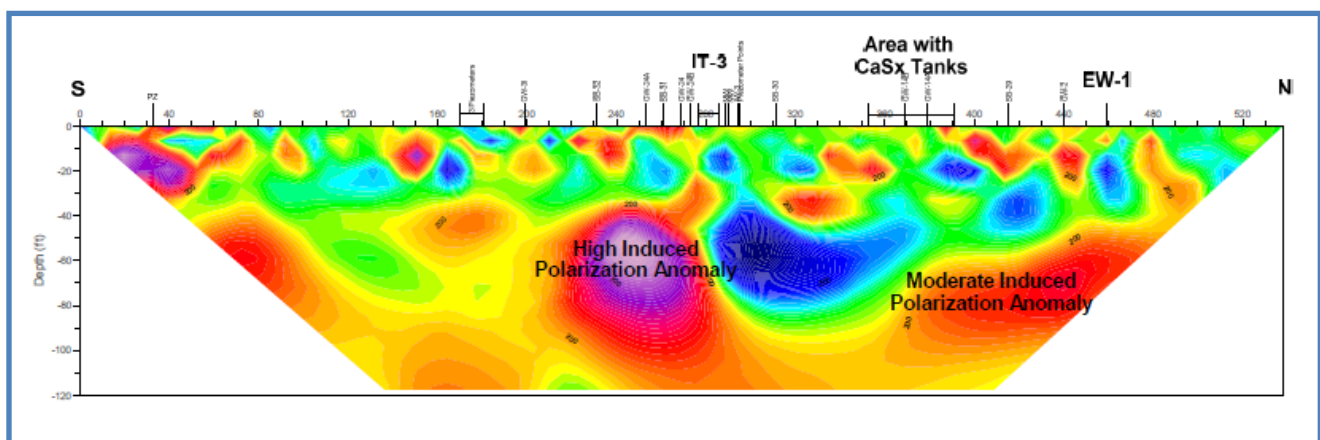
Honeywell

Haley and Aldrich

SpaceX

Mission

Spectrum Geophysics will provide superior and cost-effective field services, innovative geophysical solutions, complete client satisfaction, and an exciting work environment for our staff.



Innovation -- Efficiency -- Flexibility