

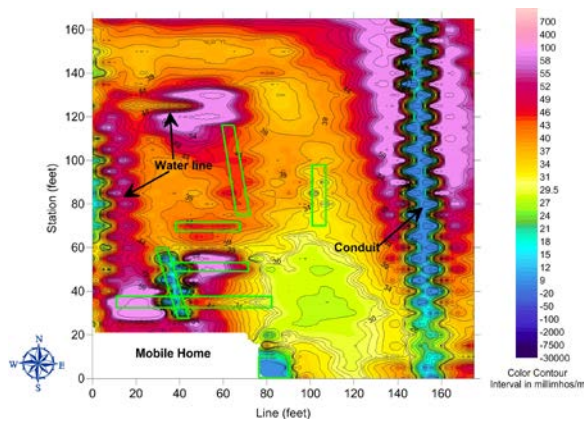
Utility and UST Investigation – MODESTO, CALIFORNIA

A geophysical investigation was conducted in Modesto, California to delineate the surface trace of detectable utilities and underground storage tanks (USTs).

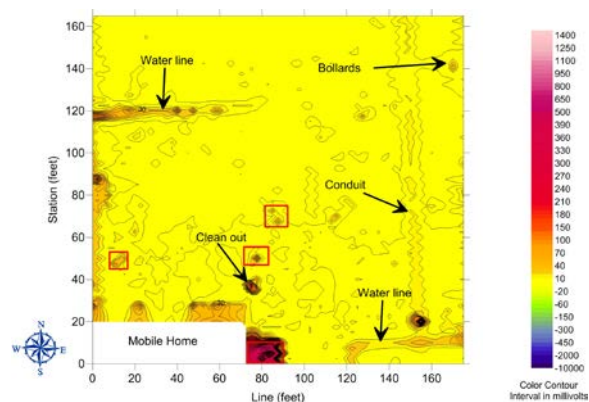
The areas of investigation were dirt and gravel covered lots which measured approximately 310 feet by 260 feet, 375 feet by 100 feet and 175 feet by 165 feet in size. Site interferences included large box compactors, sheds and metallic vault lids, reinforced concrete, metallic debris and stored metallic objects.

The equipment used included a Geonics EM-61 high-sensitivity metal detector, a Geonics EM-31DL terrain conductivity meter with Allegro field computer, a Sensors and Software Noggin ground penetrating radar (GPR) unit coupled to a 500-MHz antenna, a Fisher TW-6 M-Scope shallow-focus conductivity meter (M-Scope) and a Schonstedt Mac Series hand-held magnetometer.

All data was processed and overlaid with a site map. Those anomalies that had a known source were indicated with an arrow on the contour maps and those without were boxed to indicate further investigation was necessary. A geophysical interpretation map of all anomalies was provided with a detailed report.

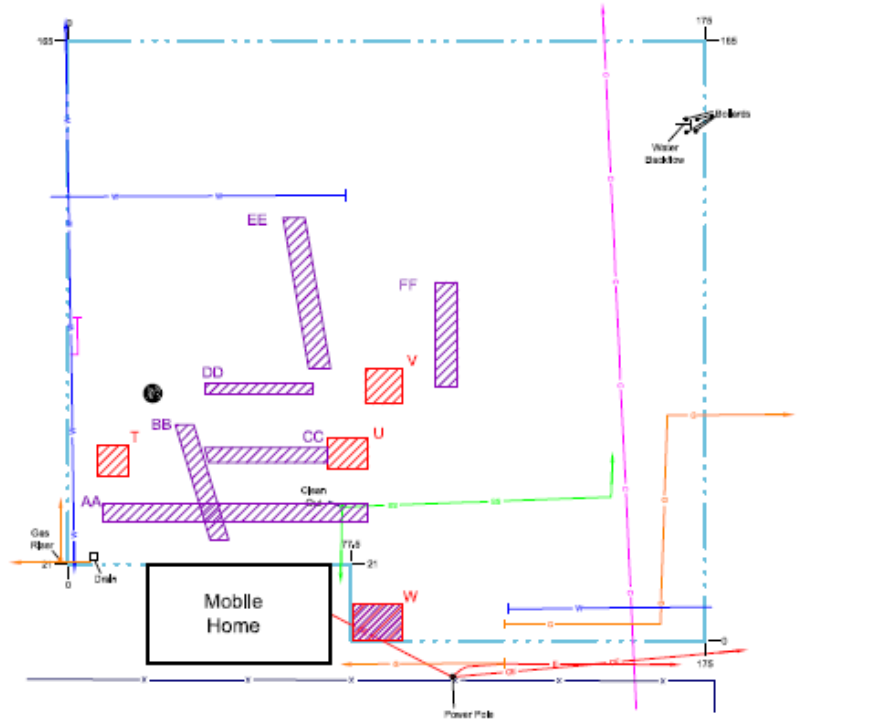


EM-31 Conductivity Data






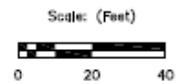
EM-61 Differential Data

UTILITY INVESTIGATION



Legend

| | | | |
|--------|---|--|-----------------------|
| — x — | Fence |  | EM-61 Anomaly |
| — c — | Burled Conduit |  | EM-31 Anomaly |
| — w — | Water |  | Area of Investigation |
| — ss — | Sanitary Sewer, queried where uncertain | | |
| — oe — | Overhead Electric | | |
| — g — | Gas | | |



Geophysical interpretation map of the site